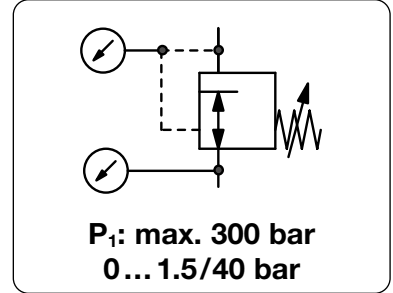


<b>Description</b>	High pressure regulator for gas cylinders for reducing pressure of compressed air or liquid gases from a high level to the required pressure.
<b>Supply pressure</b>	max. 300 bar
<b>Media</b>	compressed air, oxygen or different gases
<b>Connections</b>	according to DIN 477 (Part 5)
<b>Adjustment</b>	by T-handle
<b>Gauge port</b>	All regulators are equipped with both one supply pressure gauge and one outlet pressure gauge.
<b>Leakage rate</b>	10 <sup>-6</sup> mbar l/s
<b>Compensation</b>	All regulators are equipped with supply pressure variation compensation, so that a change in supply pressure has no effect on the outlet pressure's stability.
<b>Temperature range</b>	-30 °C to 60 °C / -22 °F to 140 °F
<b>Material</b>	Body: brass      O-rings: NBR/Buna-N and EPDM      Spring cage: brass Diaphragm: 65NBR4550, PTFE for outlet > 10 bar, stainless steel for pure gases up to 5.0



Dimensions			Version	Flow rate		Supply pressure	Pressure range	Order number
A	B	C	1-step	m <sup>3</sup> /h*2	l/min*2	max. bar	bar	
mm	mm	mm	2-step					

Cylinder pressure regulator 300 bar <small>for compressed air, connections DIN 477, with inlet / outlet gauges</small> <b>RH300</b>								
210	190	100	1-step	48	800	300	0 ... 10	<b>RH301-00C</b>
210	210	120		75	1250		0 ... 20	<b>RH301-00D</b>
				120	2000		0 ... 40	<b>RH301-00E</b>
240	190	100	2-step	8	133	300	0 ... 1,5	<b>RH302-00A</b>
				48	800		0 ... 10	<b>RH302-00C</b>



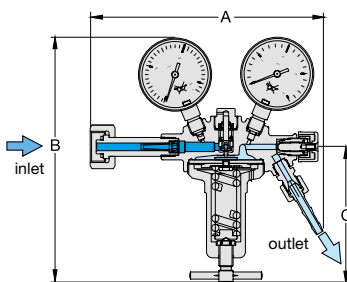
RH301, 1-step

### Special options, change the appropriate letter

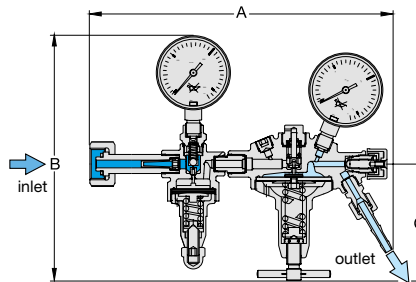
compressed air	connection gauge G <sup>5</sup> / <sub>8</sub>	RH35 -...-
carbon dioxide	CO <sub>2</sub>	RH30 -...-03
inert gas		RH30 -...-04
argon	Ar	RH30 -...-05
fuel gas		RH30 -...-06
nitrogen	N <sub>2</sub>	RH30 -...-07
forming gas		up to 40 bar RH30 -...-08
helium	He	up to 40 bar RH30 -...-09
hydrogen	H <sub>2</sub>	RH30 -...-11
testing gas		up to 40 bar RH30 -...-12
oxygen	O <sub>2</sub>	up to 20 bar RH30 -...-15
chrome-plated body	inside and outside	1-step RH301 -C....
chrome-plated body	inside and outside	2-step RH302 -C....
metal diaphragm	5.0 purity	1-step RH301 - .M...
		2-step RH302 - .M...



RH302, 2-step



cross-section, 1-step



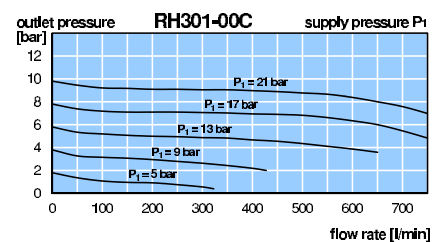
cross-section, 2-step

connection thread up to 300 bar		
gas type	inlet *1	outlet
fuel gas	W30x2 LH	G <sup>3</sup> / <sub>4</sub> LH
all others	W30x2	G <sup>1</sup> / <sub>4</sub>

flow rate - correction factor	
gas type	factor
compressed air	1.00
oxygen O <sub>2</sub>	0.95
carbon dioxide CO <sub>2</sub>	0.81
hydrogen H <sub>2</sub>	3.80
argon Ar	0.85
helium He	2.70
propane C <sub>3</sub> H <sub>8</sub>	0.80
nitrous oxide N <sub>2</sub> O	0.80



RH301-C..., chrome-plated



\*1 Thread according to DIN 477, Only left hand thread is marked LH. Right hand RH is not marked.  
\*2 at supply pressure of 2x outlet pressure + 1 bar

\* Product group

PDF CAD  
www.aircom.net

Order example:  
**RH301-00C**